

DUNA HOUSE BAROMETER

The latest property market info
from Duna House network

Issue 178
April 2026



DHS
BÉT

**PRIME
MARKET**

Listed on the Prime Market of
the Budapest Stock Exchange

PRIVACY POLICY

Statistical information and estimates published in the Duna House Barometer are the intellectual property of Duna House Franchise Ltd. Statistical information and estimates presented in the Duna House Barometer are for information purposes only, for the complexity and accuracy of which Duna House Holding does not take responsibility.

Statistical information and estimates published in the Duna House Barometer can be used for individual purposes and responsibility by any person with reference to the following conditions:

- Statistical information and estimates published in the Duna House Barometer must remain unchanged when presented.
- Statistical information and estimates presented in the Duna House Barometer must be published only with exact source indication: words “Source: Duna House Barometer” must be indicated right prior or following the text. If in context, it must directly refer to Duna House Barometer as source.

Any use other than the above will imply legal juridical measures. Duna House is entitled to claim the termination of misuse and refund of the entire damage caused. In case of breaching regulations of link posting Duna House is entitled to instantly remove the link pointing to the webpage and claim the refund of its damages.

FORTHCOMING ISSUES

DATE OF ISSUE	CONTENT
12.06.2026	May 2026 data
14.07.2026	Q2 2026 data (with price indices and housing loan data)
12.08.2026	July 2026 data

Duna House Barometer is available from the 12th day of each month (forthcoming weekday if weekend) on the webpage: www.dh.hu/barometer

If you wish to receive Duna House Real Estate Barometer or download previous issues visit our webpage: www.dh.hu

GENERAL INFORMATION CONCERNING THE CONTENT OF THE PRESENT PUBLICATION

Attention! The present publication must not serve as grounds for estimating, or making conclusions in relation of Duna House business profitability.

All data, information, estimates and professional statements presented in the publication are developed based on data gained from the activities of Duna House Holding members, or in some cases are based on subjective experience. Application of those for the entire Hungarian property market may require additional corrections.

Data sources – unless indicated differently at the given section – derive from the database operated by Duna House Holding, the content of which is compiled by members of the network upon their individual judgement and information gained from clients. The operator does not take responsibility for the comprehensiveness of the data. Data presented in the present publication is mainly based on parameters of property transactions in major Hungarian cities given by Duna House branch offices and agents.



CONTENT:

- 2.** Privacy Policy, Forthcoming issues
- 4.** Executive Summary
- 5.** Transaction data
- 6.** Transaction parameters in Budapest
- 7.** Transaction parameters in the country
- 8.** Sales data, prices, bargaining
- 9.** Demand Index, Demand for individual districts
- 10.** Quality preferences, Turnover speed
- 11.** Client profile: buyers
- 12.** Client profile: sellers

HOUSING MARKET STABILIZED AT A HIGH PRICE LEVEL, LENDING REMAINED STRONG

The April loan volume of HUF 240 billion is 79% higher than in the same period last year, while the number of transactions is only slightly below the 2025 level.

The impact of the Otthon Start Program remains steady: 39% of buyers in the country and 42% in Budapest are currently purchasing their first home using this scheme.

The price per sq. m. of concrete block units in Western Hungary has risen by 30% over the past year, marking the most significant regional price increase in the entire country.

Transaction volume declines, but financing background is resilient

Following the March recovery, activity in the domestic housing market slowed in April, although transaction volumes remained stable. According to Duna House estimates, 9815 residential properties changed hands nationwide, representing a 15% decline month-over-month and a roughly 6% decrease year-on-year compared to April of last year. On the financing side, however, the market continues to be strongly supported: the total value of residential mortgage loans reached HUF 240 billion, which is nearly 79% higher than the volume a year earlier.

Prices continued to rise, but at a slower pace

Prices continued to rise nationwide, although the pace of increase has slowed in several segments compared to the sharp rise seen in 2025. The year-on-year comparison continues to show significant price increases: in Western Hungary, the price per sq. m. of concrete block units rose by nearly 30%, while in Budapest, prices for brick and mortar homes in Buda rose by 11% and those on the Pest side by 15% over the course of a year. At the same time, the market has become more differentiated: while prices in some segments have stabilized at high levels, they continued to increase in other areas. Turnover speeds also present a mixed picture: concrete block apartments in Eastern Hungary and brick and mortar homes in the city centre are selling faster, while the pace of sales has slowed in Buda.

The proportion of high-value transactions continued to rise in Buda

The structure of demand in the capital continues to shift. District 13 remains exceptionally popular, while in Buda, transactions are moving toward increasingly higher price ranges: one-third of deals now close at a purchase price exceeding HUF 110 million, and one in four sales is completed at a price per sq. m. of around HUF 2 million. Prices have also risen in Pest, although the vast majority of transactions continue to be concentrated in the HUF 40-90 million range.

First-time homebuyers still have a strong presence in the country

The impact of the Otthon Start Program continues to be strongly felt outside of Budapest. The proportion of first-time homebuyers rose to 39%, while investor activity remained more subdued. Among buyers in the country, those in their 30s continue to dominate, while on the seller side, the share of inherited properties is high: nearly 30% of transactions involve this type of sale.

Significant regional differences in negotiation margins and property quality

Spectacular differences in the quality of the housing stock remain evident among the individual regions of Hungary. In Budapest and County Pest, the vast majority of transactions involve properties in a good or very good condition, while in Western Hungary, the proportion of properties in need of renovation remains high. The scope for negotiation also presents a mixed picture: in the country, particularly for brick and mortar homes, buyers still have considerable room to negotiate, while in Buda, the scope for negotiation is much narrower due to higher price levels.

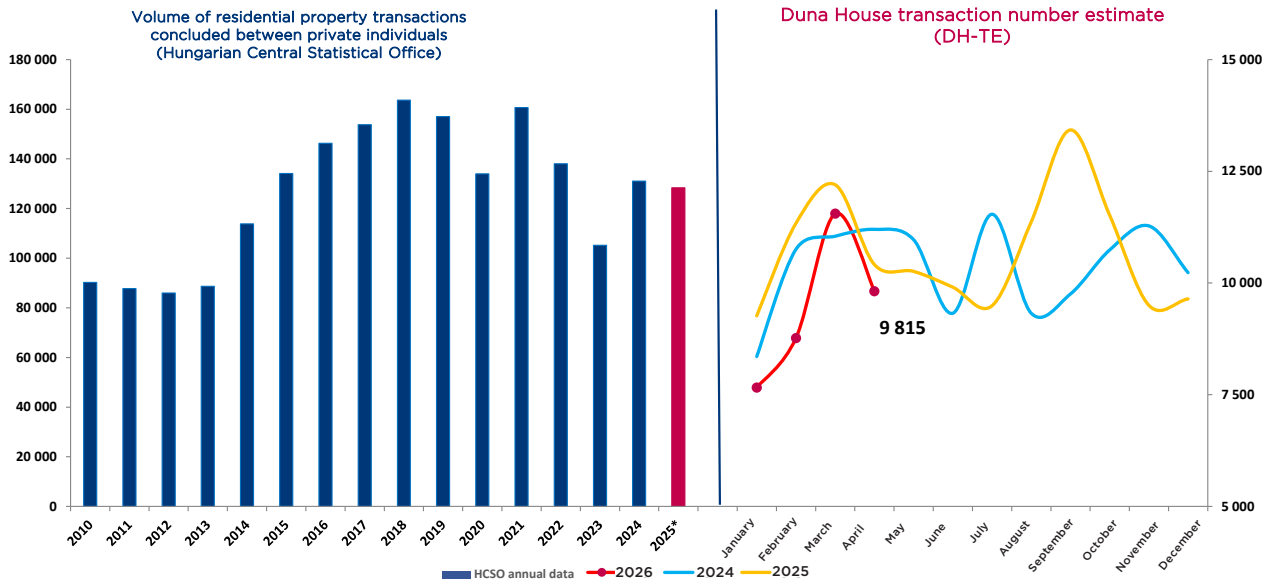
Further information:
Péter Szegő
Head Analyst
+36 30 312 5333
szego.peter@dh.hu

DH Group Nyrt.
Credipass Kft.
1027 Budapest, Kapás utca 6-12.
+36 1 555 2222
www.dh.hu

TRANSACTION DATA

DUNA HOUSE TRANSACTION NUMBER ESTIMATE (DH-TE)

Duna House presents its monthly Transaction Number Estimate (DH-TE) and Mortgage Forecast below, showing that 9815 residential property transactions were concluded in April 2026 and residential mortgage contracts worth HUF 240 billion may have been signed in the whole of Hungary.



January got off to a slow start, with around 7500 transactions, followed by a rapid surge in February and March – the latter month closed at around 11,700 transactions, close to the 2025 peak. In April, the market shifted back to a lower gear: the estimated 9815 transactions were about 15% below the March level, even though this figure showed only a moderate decline compared to data from the same period in 2025. The trend therefore remains stable, indicating a moderate transaction volume, and based on patterns from previous years, further seasonally volatile activity is expected for the rest of the year.

According to data from Credipass, the group’s international financial brand, in Hungary, HUF 240 billion in residential mortgage loan contracts were signed in April 2026. This volume is exactly the same as the March figure, and compared to the data for April of last year published by MNB, the Hungarian National Bank, it represents an increase of more than 79%.

THE TABLE BELOW SHOWS MONTHLY TRANSACTION VOLUME ESTIMATES OF DUNA HOUSE.

	JANUARY	FEBRUARY	MARCH	APRIL	MAY	JUNE	JULY	AUGUST	SEPTEMBER	OCTOBER	NOVEMBER	DECEMBER
2022	10 815	13 793	14 548	11 911	12 519	10 859	8 978	9 748	9 200	8 326	8 000	6 474
2023	5 853	6 253	7 787	6 787	10 187	7 120	6 107	8 213	8 067	7 853	8 800	7 813
2024	8 354	10 754	11 046	11 200	10 969	9 323	11 538	9 323	9 754	10 738	11 277	10 231
2025	9267	11 338	12 200	10 415	10 262	9908	9492	11369	13426	11518	9503	9646
2026	7662	8769	11554	9815								

Methodology behind DH-TE: Regardless of the time of year, the most important indicator of the real estate market is the annual number of sale transactions. The DH-TE figure is an estimate published by Duna House and it reflects interim approximate data. The estimate is based on the number of monthly property transactions brokered by Duna House and the estimated market share of Duna House. The estimate of the current monthly market share of Duna House is based on the following indicators: 1. Data published by the Hungarian Central Statistical Office on transactions among private individuals. Since the Statistical Office publishes data with several months’ delay, market share can be adjusted retroactively which also results in a more accurate estimate as well. Please note: After 2016 and as a consequence of the boom in newly-built apartments, pre-contracted purchase transactions appear in the statistics of the Statistical Office with a delay of several months or even one or two years, after the capital transfer tax has been levied, which results in anomalies in the statistics. 2. The number of Energy Certificates issued; 3. Subjective assessment based on other management information from Duna House Holding.

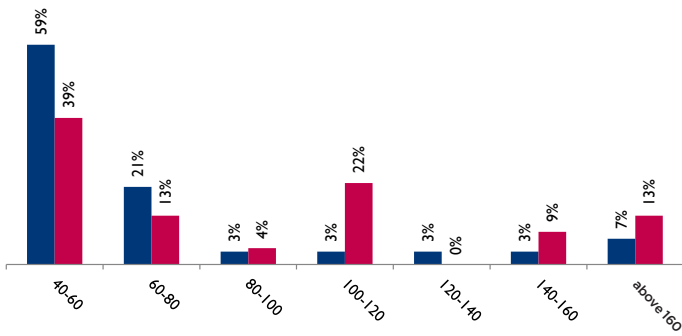
Please also note that DH-TE data cannot be used for defining the volume of transactions brokered by Duna House, or for estimating the business profit of Duna House Holding or for the drawing of any related conclusions.

Mortgage forecast: Figures published by Credipass can primarily be used for quick trend forecasts; the National Bank of Hungary publishes the actual figures for the second last month at the beginning of each month.

TRANSACTION PARAMETERS IN BUDAPEST

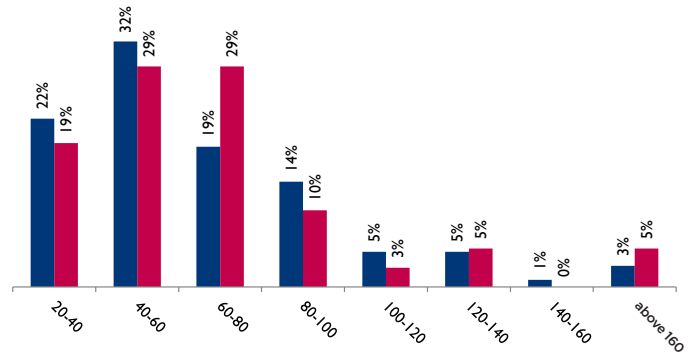
According to Duna House's April data, apartments ranging from 40 to 60 sq. m. continue to be the leading category in Buda, accounting for 39% of sales, followed by the segment of medium-sized apartments between 100 and 120 sq. m., at 22%. Prices per sq. m. show a dramatic shift: 22% of sales in Buda are in the HUF 1.4-1.6 million range, while 17% are concluded at prices exceeding HUF 2 million per sq. m. The price structure has shifted significantly upward compared to last year: 22% of transactions fall between HUF 110 and 130 million, and one in three sales exceeds HUF 130 million. In the districts of Pest, apartments ranging from 40 to 60 sq. m. and those from 60 to 80 sq. m. each account for 29% of the total. In terms of price per sq. m., the HUF 1.2-1.4 million (20%) and HUF 1.4-1.6 million (19%) brackets dominated, while on the purchase price side, the HUF 40-70 million category accounted for 41% of transactions, making it the most active price range in Pest.

BUDA

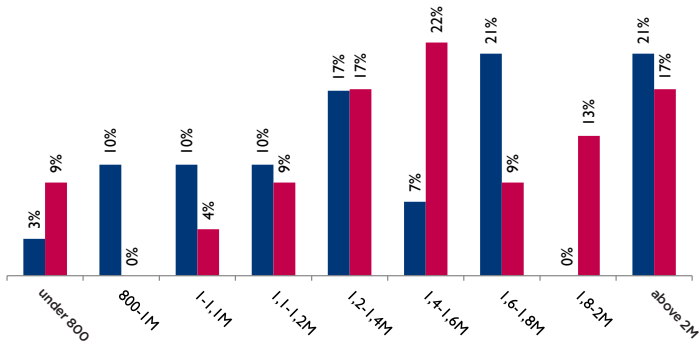


apartment size (m²)

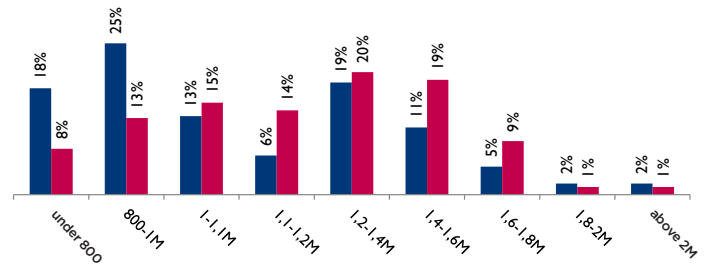
PEST



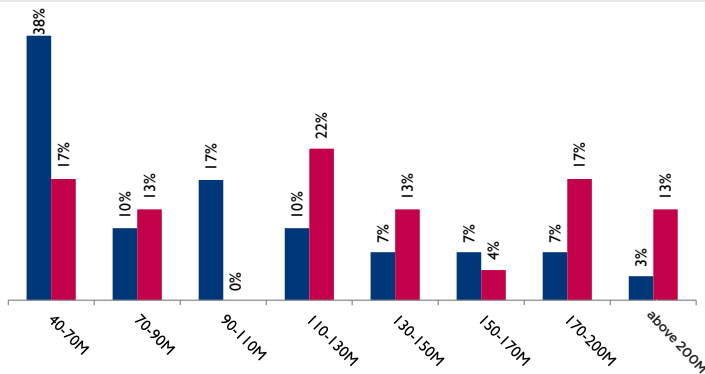
apartment size (m²)



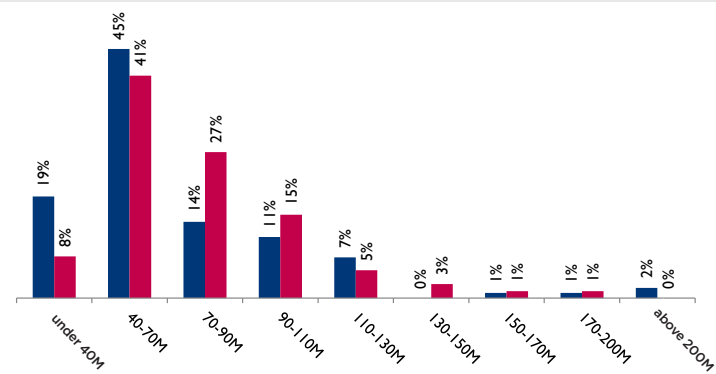
sq. m. price (in thousand HUF)



sq. m. price (in thousand HUF)



apartment price (in million HUF)



apartment price (in million HUF)

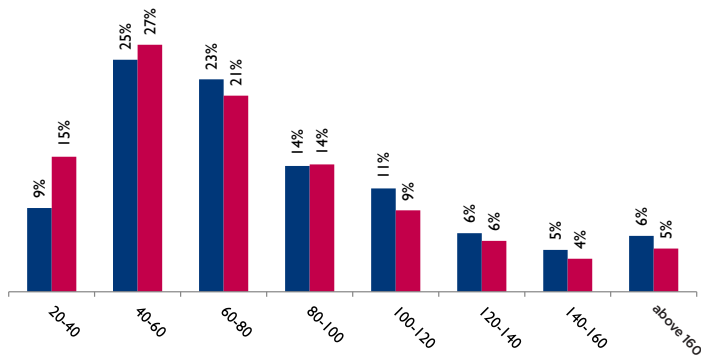
■ April 2025 ■ April 2026

Based on properties sold by Duna House Franchise Network.

TRANSACTION PARAMETERS IN THE COUNTRY

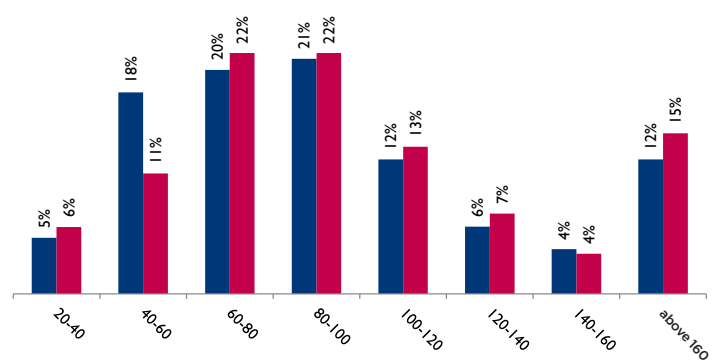
At the national level – excluding Central Hungary – properties ranging from 40 to 60 sq. m. accounted for 27% of all transactions, while those between 60 and 80 sq. m. accounted for 21%. Square metre prices in the country show a significant shift: the share of properties priced above HUF 1 million per sq. m. jumped from 7% to 22% in one year, while the category priced below HUF 300,000 per sq. m. remained at 19%, indicating significant polarization. In terms of purchase price structure, the HUF 30–50 million range accounts for nearly 35% of transactions in the country, and one in ten transactions was concluded for an amount exceeding HUF 80 million. In County Pest, properties with a floor space of 60–100 sq. m. dominate, accounting for 44% of sales. Twenty percent of sales in County Pest are concluded at a price per sq. m. exceeding HUF 1 million, and one in five transactions is completed at a purchase price exceeding HUF 100 million – this clearly demonstrates that price levels around the capital are steadily approaching those of the capital.

COUNTRYWIDE (EXCLUDING CENTRAL HUNGARY)

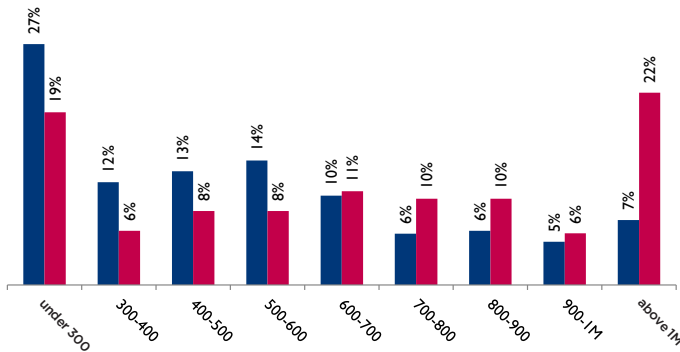


apartment size (m²)

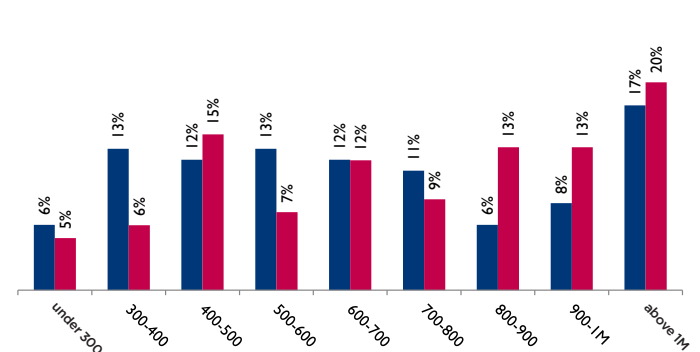
COUNTY PEST



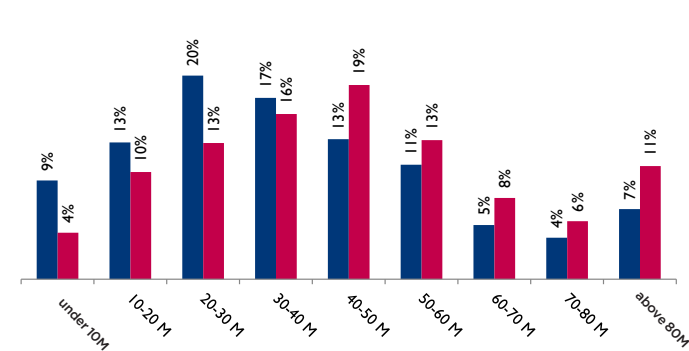
apartment size (m²)



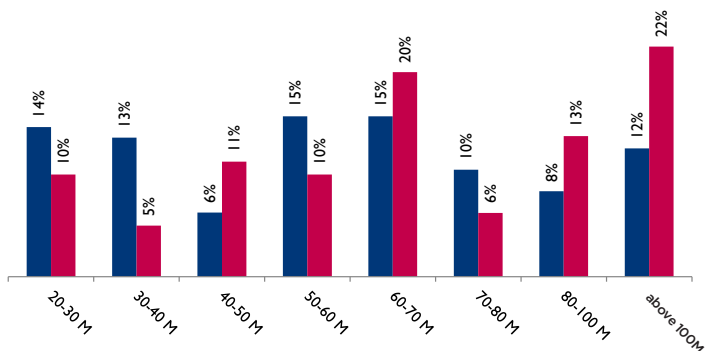
sq. m. price (in thousand HUF)



sq. m. price (in thousand HUF)



apartment price (in million HUF)



apartment price (in million HUF)

■ April 2025 ■ April 2026

Based on properties sold by Duna House Franchise Network.

SALES DATA - PRICES - BARGAINING MARGINS

Compared to the sales figures from April 2025, prices have risen in every segment in the country. The price per sq. m. for concrete block apartments in the East rose from HUF 653,000 to HUF 702,000, while those in the West saw a particularly sharp increase: the price per sq. m. soared from HUF 628,000 to HUF 814,000, a 30% jump in one year. The change is more moderate for brick and mortar homes: the price per sq. m. rose from HUF 361,000 to HUF 406,000 in the East and from HUF 481,000 to HUF 504,000 in the West. Bargaining power remains significant: around 7% for brick and mortar homes in the country and 5% for concrete block units in the West, and 3% in the East.

PANEL: COUNTRYWIDE

	EAST				WEST			
	price	m ² price	change in listing price	bargain	price	m ² price	change in listing price	bargain
April 2025	31 491 000	653 000	1%	5%	31 466 000	628 000	1%	3%
April 2026	39 373 000	702 000	3%	3%	41 569 000	814 000	2%	5%

BRICK: COUNTRYWIDE

	EAST				WEST			
	price	m ² price	change in listing price	bargain	price	m ² price	change in listing price	bargain
April 2025	31 678 000	361 000	2%	6%	42 024 000	481 000	3%	7%
April 2026	35 852 000	406 000	4%	7%	42 982 000	504 000	3%	7%

The average price per sq. m. for concrete block units in Buda was around HUF 1.17 million, representing a 5% increase year-on-year, while the price per sq. m. for similar homes in Pest was HUF 1.15 million. The average price per sq. m. for brick and mortar properties in Buda rose to HUF 1.48 million (+11%), while the average for brick and mortar apartments in Pest was HUF 1.09 million (+15%). Interestingly, the average selling price of the same type of homes the city centre decreased over the course of a year, which may be due to the differing characteristics of the housing stock.

PANEL: BUDAPEST

	BUDA				PEST			
	price	m ² price	change in listing price	bargain	price	m ² price	change in listing price	bargain
April 2025	62 289 000	1 113 000	6%	3%	53 824 000	1 085 000	0%	0%
April 2026	65 067 000	1 173 000	4%	2%	61 055 000	1 152 000	2%	3%

BRICK: BUDAPEST

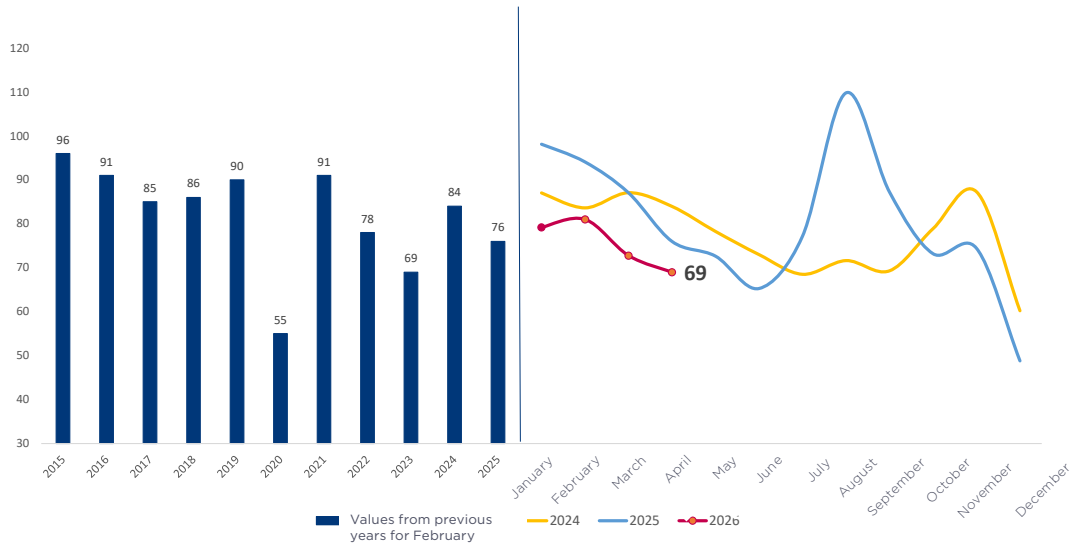
	BUDA				PEST				INNER CITY			
	price	m ² price	change in listing price	bargain	price	m ² price	change in listing price	bargain	price	m ² price	change in listing price	bargain
April 2025	112 329 000	1 334 000	1%	3%	62 540 000	945 000	0%	3%	84 603 000	1 253 000	2%	5%
April 2026	126 150 000	1 478 000	2%	2%	68 761 000	1 090 000	1%	4%	76 318 000	1 225 000	4%	5%

Based on purchase prices of the given period of properties brokered by Duna House.

Methodology: Changes in the average price may occur if more large-floor-plan apartments changed hands during a given period. Real price growth is reflected by the change in prices per square meter. Change in the listing price is the difference between the first price indicated by the seller in the Duna House assignment and the last registered price at the time of the appearance of the buyer. Bargain shows additional changes in the price agreed upon by the seller and buyer. The two indicators together give a good picture of the difference in price between the original idea of the seller and the actual final price.

BUYERS - DEMAND INDEX

Based on data from April 2026, the demand index stands at 69 points, representing a 7-point decline from the 76-point level recorded during the same period in 2025, and indicating a lower demand compared to the 81 points recorded at the beginning of the year. The gap compared to the April 2021 peak (91 points) is significant, and the trend of the index reflects the usual slowdown during the spring season.



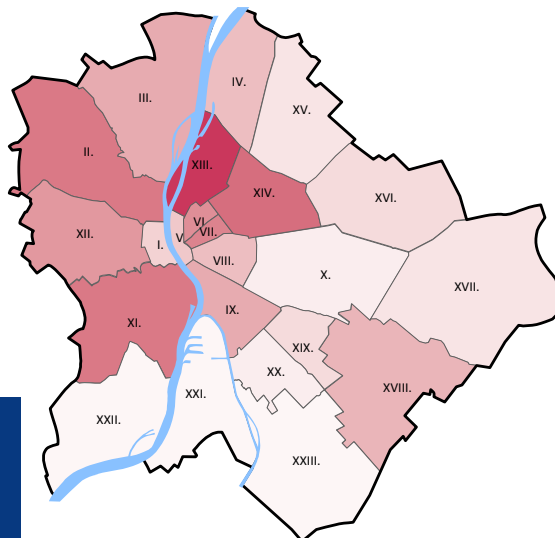
Methodology behind Demand Index: The basis of the estimate is the activity registered by our agents in various, mainly major cities and Duna House offices. Corrections are made depending on the number of active agents and working days. The Demand Index is an important indication of buyer side's reactions to political decision or solutions offered by the financial sector. Demand Index is a quantitative indicator which has no direct connection with the realized or future transaction numbers. The latter is a qualitative issue highly affected by market environment and available financial product.

DEMAND FOR INDIVIDUAL DISTRICTS

In February 2026, District 13 was still the most popular among homebuyers in Budapest, while the outer districts of Pest and Buda (Districts 21, 22 and 23) remained at the bottom of the ranking. The most significant change over the past year has been the spectacular rise of Districts 2 and 7, while interest in District 14, which had previously been among the top three, has declined noticeably. The popularity of the downtown districts and of Újbuda has remained stable, so demand continues to focus on well-established, central and developing parts of the city

DISTRICT	APRIL 2025	APRIL 2026
Bp. 01.	8,9%	8,1%
Bp. 02.	18,0%	16,4%
Bp. 03.	14,4%	12,2%
Bp. 04.	9,9%	10,3%
Bp. 05.	10,8%	8,7%
Bp. 06.	14,6%	14,4%
Bp. 07.	15,3%	15,1%
Bp. 08.	12,6%	9,8%
Bp. 09.	11,3%	11,7%
Bp. 10.	6,4%	5,5%
Bp. 11.	17,9%	16,6%
Bp. 12.	16,3%	13,6%
Bp. 13.	20,1%	22,3%
Bp. 14.	16,1%	17,0%
Bp. 15.	8,7%	6,4%
Bp. 16.	7,5%	7,4%
Bp. 17.	4,9%	6,2%
Bp. 18.	9,4%	10,5%
Bp. 19.	7,9%	7,5%
Bp. 20.	7,0%	5,8%
Bp. 21.	3,8%	3,2%
Bp. 22.	4,7%	4,0%
Bp. 23.	2,8%	3,1%

INTEREST TOWARD THE DISTRICTS IN BUDAPEST:

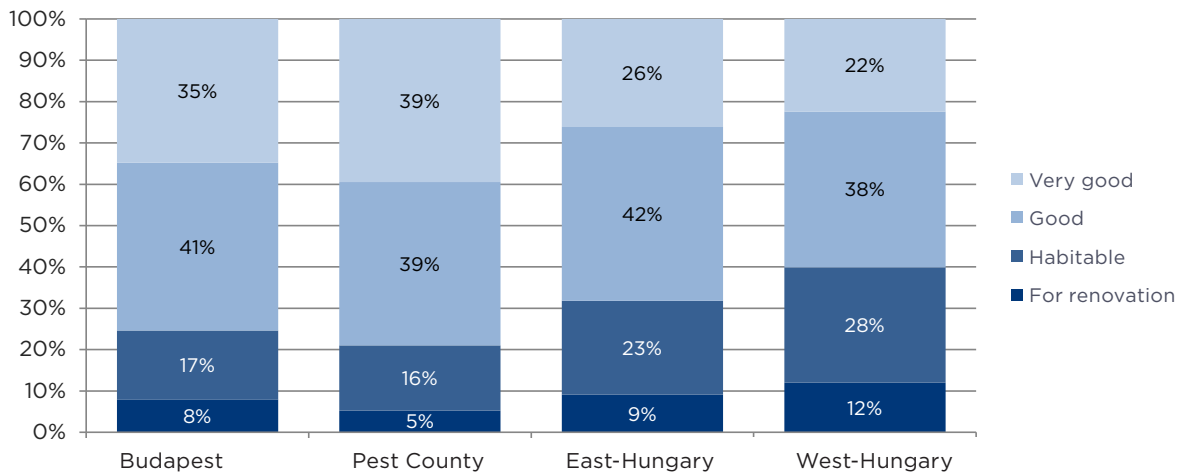


Methodology: Our clients with a purchase intention indicate their preferred districts (more at the same time) when meeting our agents. The above preference map is put together based on this "popularity information".

Data is analysed based on real estate transactions brokered by Duna House. The territorial distribution of DH transactions may differ from the territorial distribution of the market as a whole. Duna House Holding pursues its real estate agency activities mainly in Budapest and in major cities. Duna House Holding does not make corrections in view of the differences in territorial distribution between its own transactions and of the market in general.

QUALITY PREFERENCES

In Budapest and County Pest, properties in a good and very good condition account for 75% and 79% of the market, respectively - meaning that apartments that can be occupied immediately clearly dominate the market here. In Eastern Hungary, the combined share of the “good” and “very good” categories is 68%, while in Western Hungary it is only around 60%, and in the region as a whole, properties requiring renovation or those that are merely habitable account for 40%. The regional contrast remained striking in April 2026: in the capital and its surroundings, buyers were predominantly looking for homes ready for immediate occupation, while in the Western part of the country, there is some significant turnover in properties awaiting modernization.



TURNOVER SPEED (TIME NEEDED TO SELL)

The sales cycle in April presented a mixed picture: compared to data from April 2025, transactions accelerated in some segments but slowed down in others. The most dramatic improvement was seen for concrete block units in Eastern Hungary, where the average sales cycle shortened from 81 to 58 days. Sales of the same category of homes in the West also accelerated (from 78 to 74 days), while in Pest it lengthened slightly (from 52 to 56 days); in Buda, however, sales of concrete block units clearly slowed, now taking an average of 78 days (compared to 60 last year). The latter reflects the combined effect of rising price levels in Buda and a more cautious buyer decision-making. For pre-owned brick and mortar properties, the downtown area saw the most dramatic acceleration: the average time to sell dropped from 91 to 78 days. Sales times for brick and mortar homes in the West also accelerated (from 127 to 114 days), while in the East they slowed slightly (from 105 to 115 days). Sales times for brick and mortar homes in Buda and Pest remained stable at around 94–95 days.

PANEL

TIME NEED OF SALE (DAY)

	EAST	WEST	BUDA	PEST
April 2025	81	78	60	52
April 2026	58	74	78	56

BRICK

TIME NEED OF SALE (DAY)

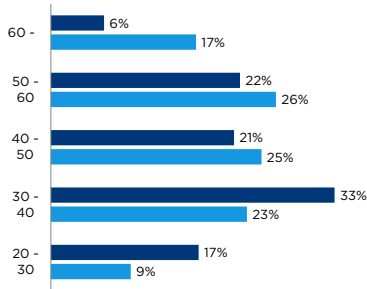
	EAST	WEST	BUDA	PEST	INNER CITY
April 2025	118	122	119	112	95
April 2026	108	115	107	94	74

Data is assessed based on real estate sold by Duna House. Territorial distribution of transactions brokered by Duna House may differ from the territorial distribution of the market in whole. Duna House Holding carries out its real estate agency activities mainly in Budapest and major cities. Duna House Holding does not make corrections in relation of the territorial distribution of own and market transactions.

BUYER PROFILE IN BUDAPEST

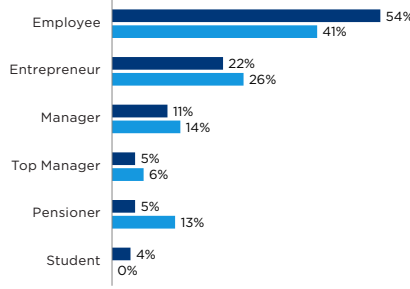
Based on Duna House's April transactions in the capital, the 30-40 age group was the most active among buyers in Budapest, accounting for 33% of the market. The 50-60 age group (22%) and the 40-50 age group (21%) were both significant, indicating that market activity was concentrated among the middle age groups. Fifty-four percent of buyers were employees, while 22% were self-employed. Among the motivations, buying a first home led the way at 42%, followed by making an investment (25%) and moving into a larger property (18%). The average purchase price in Budapest was around HUF 81 million in April.

BUYERS' AGE IN BUDAPEST



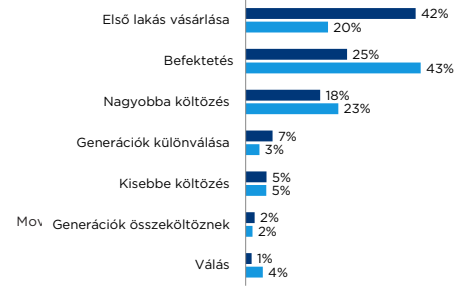
AGE	AVERAGE PRICE	m ²
20 - 30	60 766 000	49
30 - 40	84 265 000	65
40 - 50	94 839 000	78
50 - 60	75 905 000	68
60 -	85 641 000	73

BUYERS' STATUS IN BUDAPEST



STATUS	AVERAGE PRICE	m ²
Employee	68 653 000	56
Top Manager	127 300 000	84
Manager	92 200 000	100
Pensioner	74 400 000	48
Student	71 975 000	49
Entrepreneur	82 825 000	78

MOTIVATION IN BUDAPEST

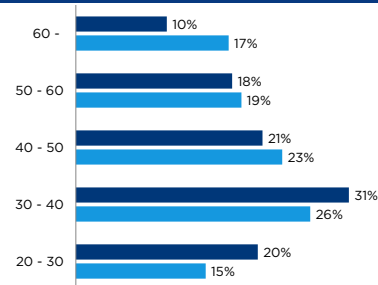


SITUATION	AVERAGE PRICE	m ²
Investment	74 372 000	63
First Home	69 802 000	54
Separation of generations	59 956 000	43
Moving together of generations	120 634 000	141
Moving into smaller	79 986 000	52
Moving into bigger	122 713 000	108
Divorce	69 750 000	71

BUYER PROFILE IN THE COUNTRY

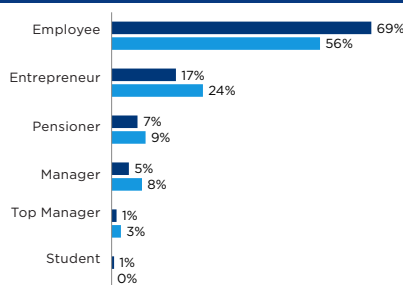
In April 2026, homebuyers in the country had a balanced age distribution: the 30-40 age group accounted for 31%, followed by the 40-50 and 20-30 age groups, each at 21%, while the 50-60 age group represented an additional 18%. Sixty-nine percent of buyers were employees, while 17% were self-employed. Among the reasons for purchasing, the impact of the Otthon Start Program remained consistent: 39% of buyers in the country were acquiring their first property, followed by moving into a larger home (23%) and buying as an investment (20%). So, the proportion of first-time homebuyers remains far higher than that of investors – a significant structural shift in the market outside the capital. The average purchase price outside of Budapest was around HUF 50 million.

BUYERS' AGE IN THE COUNTRY



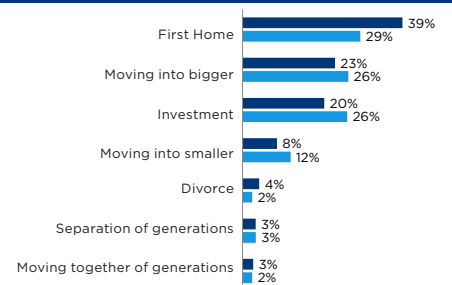
AGE	AVERAGE PRICE	m ²
20 - 30	47 268 000	88
30 - 40	52 956 000	91
40 - 50	54 223 000	89
50 - 60	47 339 000	78
60 -	46 865 000	71

BUYERS' STATUS IN THE COUNTRY



STATUS	AVERAGE PRICE	m ²
Employee	46 794 000	88
Top Manager	93 158 000	80
Manager	60 515 000	72
Pensioner	48 571 000	64
Student	19 500 000	47
Entrepreneur	58 754 000	93

MOTIVATION IN THE COUNTRY



SITUATION	AVERAGE PRICE	m ²
Investment	43 760 000	65
First Home	45 139 000	81
Separation of generations	61 455 000	76
Moving together of generations	65 433 000	114
Moving into smaller	48 318 000	72
Moving into bigger	66 214 000	115
Divorce	44 036 000	74

■ April 2025 ■ April 2026

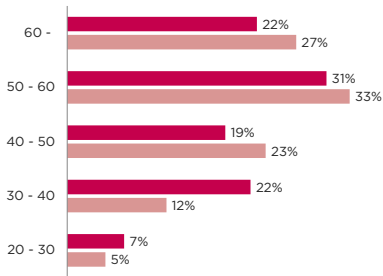
Under our methodology investment as a motivation includes all property transactions that, judged by the buyer's characteristics, can be considered as an investment, i.e. this is not a strictly business category. It includes all family investments and short-term investors who buy a property in a poor state of repair, renovate it and sell it on immediately. These latter buyers have a favourable effect on improving the overall state of repair of the existing pool of properties and are, in view of current construction industry and property market conditions, performing a welcome activity.

Data presented above relating to age, status and reason of purchase have been acquired through voluntary declarations of our clients. Therefore, they qualify as a sample and are regarded as estimates.

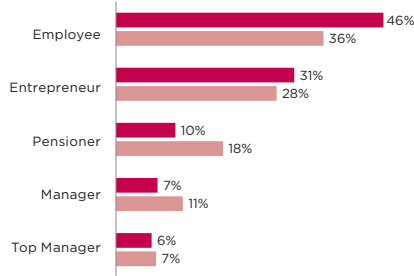
SELLER PROFILE IN BUDAPEST

The most active group of residential property sellers in Budapest were those aged 50–60, accounting for 31%; the share of those over 60 was an additional 22%, while those aged 30–40 and 40–50 accounted for 22% and 19%, respectively. Forty-six percent of sellers worked as employees, while 31% were self-employed. The primary reason for selling was divesting from investments, which accounted for 40% of sales in the capital – a consistently high proportion that reflects the unique structure of the capital’s market, where the investor segment carries significant weight. This was followed by moving into a larger home (24%) and the sale of an inheritance (19%).

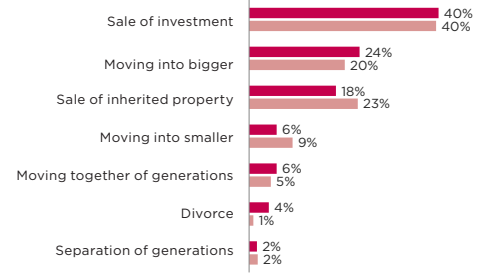
SELLERS' AGE BUDAPEST



SELLERS' STATUS BUDAPEST



MOTIVATION BUDAPEST



AGE	AVERAGE PRICE	m ²
20 - 30	88 512 000	60
30 - 40	69 849 000	65
40 - 50	82 481 000	63
50 - 60	85 825 000	71
60 -	80 120 000	67

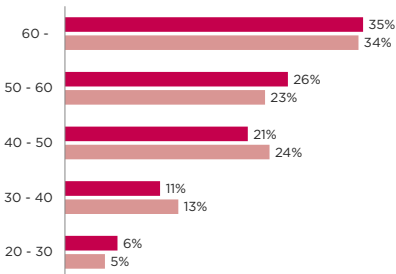
STATUS	AVERAGE PRICE	m ²
Employee	67 946 000	57
Top Manager	107 067 000	60
Manager	76 599 000	82
Pensioner	98 950 000	106
Entrepreneur	81 960 000	63

SITUATION	AVERAGE PRICE	m ²
Sale of investment	81 622 000	59
Separation of generations	114 643 000	151
Moving together of generations	58 500 000	59
Moving into smaller	129 629 000	107
Moving into bigger	76 475 000	56
Sale of inherited property	77 614 000	71
Divorce	62 398 000	82

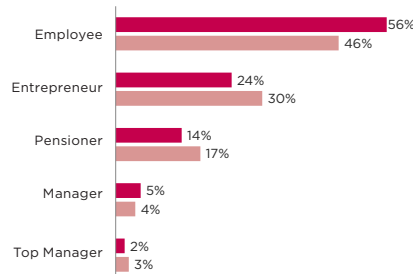
SELLER PROFILE IN THE COUNTRY

According to data collected by Duna House for April 2026, the age distribution of home sellers in the country was clearly shifting toward older age groups: 35% were over 60, and another 26% were between 50 and 60, meaning that six out of every ten sellers were older than 50 years of age. Fifty-six percent of sellers were employees, 24% were self-employed and 14% were retired. Among the reasons for selling, the share of parting with a former investment (29%) and selling an inherited property (28%) were roughly equal – these two factors together accounted for nearly 60% of all sales in the country. Among the motivations for moving, the share of moving into a smaller (17%) and a larger home (16%) was nearly identical. The market outside of Budapest was thus still driven by generational wealth redistribution and the restructuring of investment portfolios.

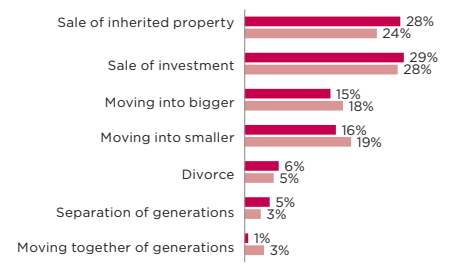
SELLERS' AGE IN THE COUNTRY



SELLERS' STATUS IN THE COUNTRY



MOTIVATION IN THE COUNTRY



AGE	AVERAGE PRICE	m ²
20 - 30	44 860 000	77
30 - 40	42 947 000	98
40 - 50	51 443 000	84
50 - 60	54 146 000	93
60 -	42 750 000	76

STATUS	AVERAGE PRICE	m ²
Employee	44 304 000	83
Top Manager	82 300 000	148
Manager	91 108 000	126
Pensioner	44 549 000	81
Entrepreneur	58 938 000	85

SITUATION	AVERAGE PRICE	m ²
Sale of investment	50 889 000	70
Separation of generations	63 442 000	105
Moving together of generations	58 500 000	69
Moving into smaller	70 583 000	122
Moving into bigger	51 762 000	80
Sale of inherited property	36 985 000	82
Divorce	75 048 000	112

■ April 2025 ■ April 2026



PERSONALIZED AND CUSTOMIZED REAL ESTATE MARKET STUDIES FROM DUNA HOUSE'S RESEARCH DEPARTMENT

DECISION SUPPORTIVE BUSINESS ANALYSIS FOR ALL.

Duna House research department's experienced team offers the preparation of personalized and customized market studies, reports, as well as answers to project specific needs.

The greatest advantage of Duna House studies is the provision of the most up-to-date information to our clients, based on our own database of a wide scale and inputs both on the demand and supply side of the market.

Duna House's database is the largest collection of up-to-date real sale and purchase data in the country, containing information in addition to prices about demand, bargain potential, quality preferences and client profiles. Our analytical portfolio also includes the latest mortgage data for the support of a comprehensive research.

WHO IS IT INTENDED FOR?

Our analytical studies can support all those who believe in the power of data and facts, and who wish to make their business decisions based on them.

WE RECOMMEND OUR STUDIES TO:

- ✓ Constructors and developers
- ✓ Project owners and investors
- ✓ Community managers
- ✓ Municipalities

**REQUEST AN OFFER AND GET THE MOST OUT
OF DUNA HOUSE MARKET DATA!**

elemzes@dh.hu



DUNA HOUSE[®]

1027 Budapest, Kapás utca 6-12. • Phone: +36 1 555 2222 • Fax: +36 1 555 2220

www.dh.hu